

**RAPID**  
**MAXIMALE SICHERHEIT DURCH**  
**TRANSPARENZ: ANGRIFFSFLÄCHE**  
**MIT EXPOSURE COMMAND**  
**MINIMIEREN**

Nico Feitsma

Enterprise Account Executive

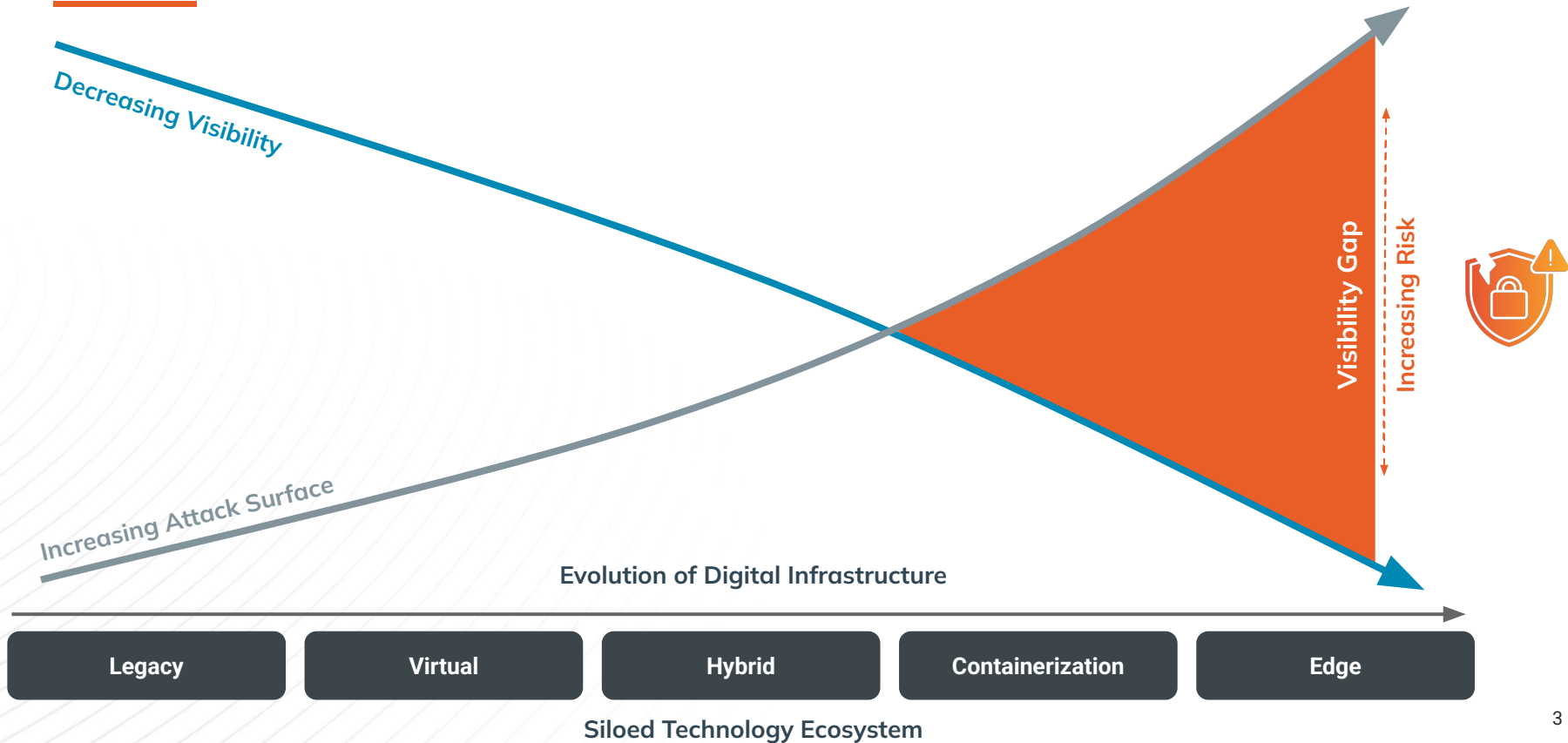


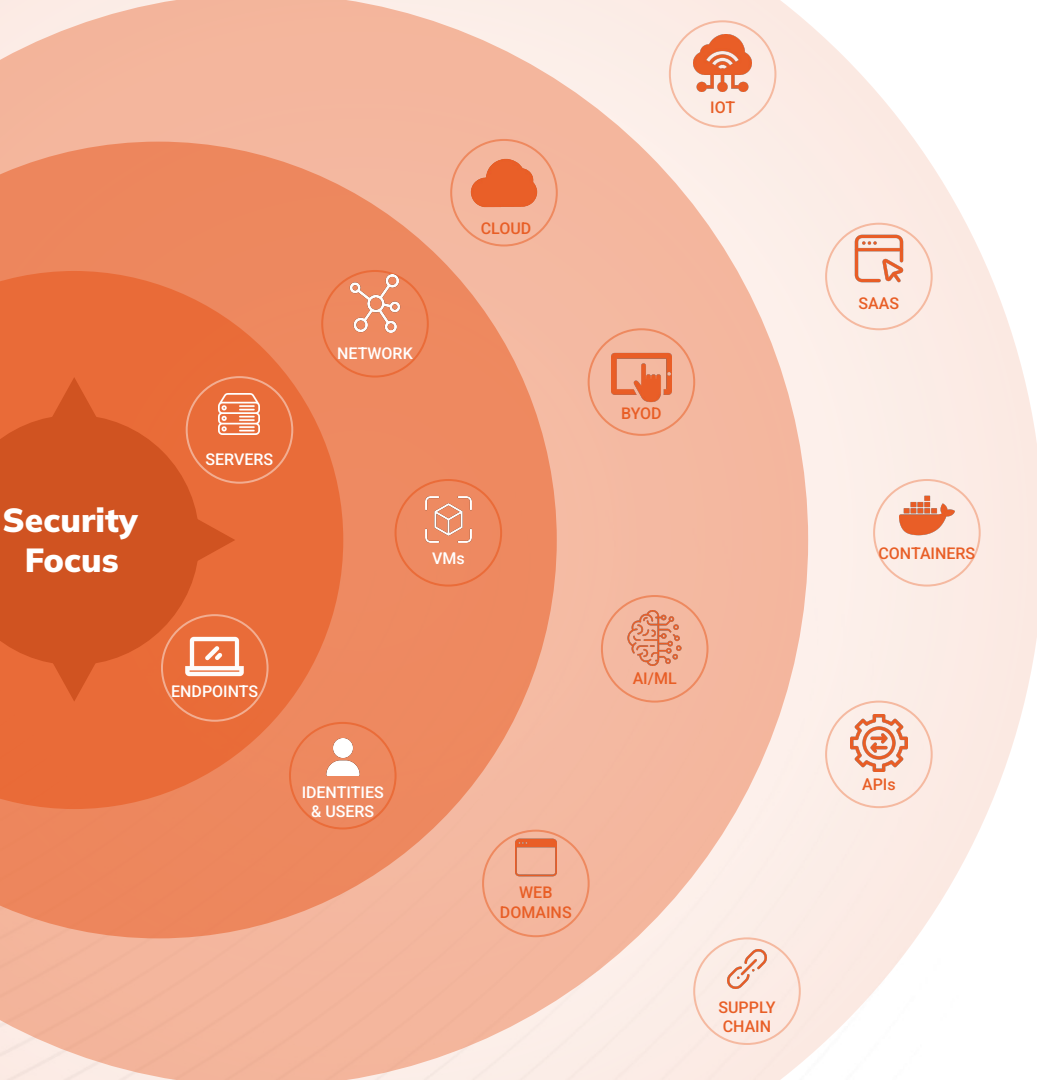
# The Problem:

**Only 17% of organizations can clearly identify and inventory a majority (95% or more) of their assets.”**

*- Gartner's Cybersecurity Controls Assessment Benchmark 2023*

# The Security Visibility Gap





## Fragmented Attack Surface Challenges Productivity, Efficiency, Credibility

### MORE DATA TO SYNTHESIZE

Challenged to keep up with volume of change to get a cohesive understanding of your total attack surface that you can trust

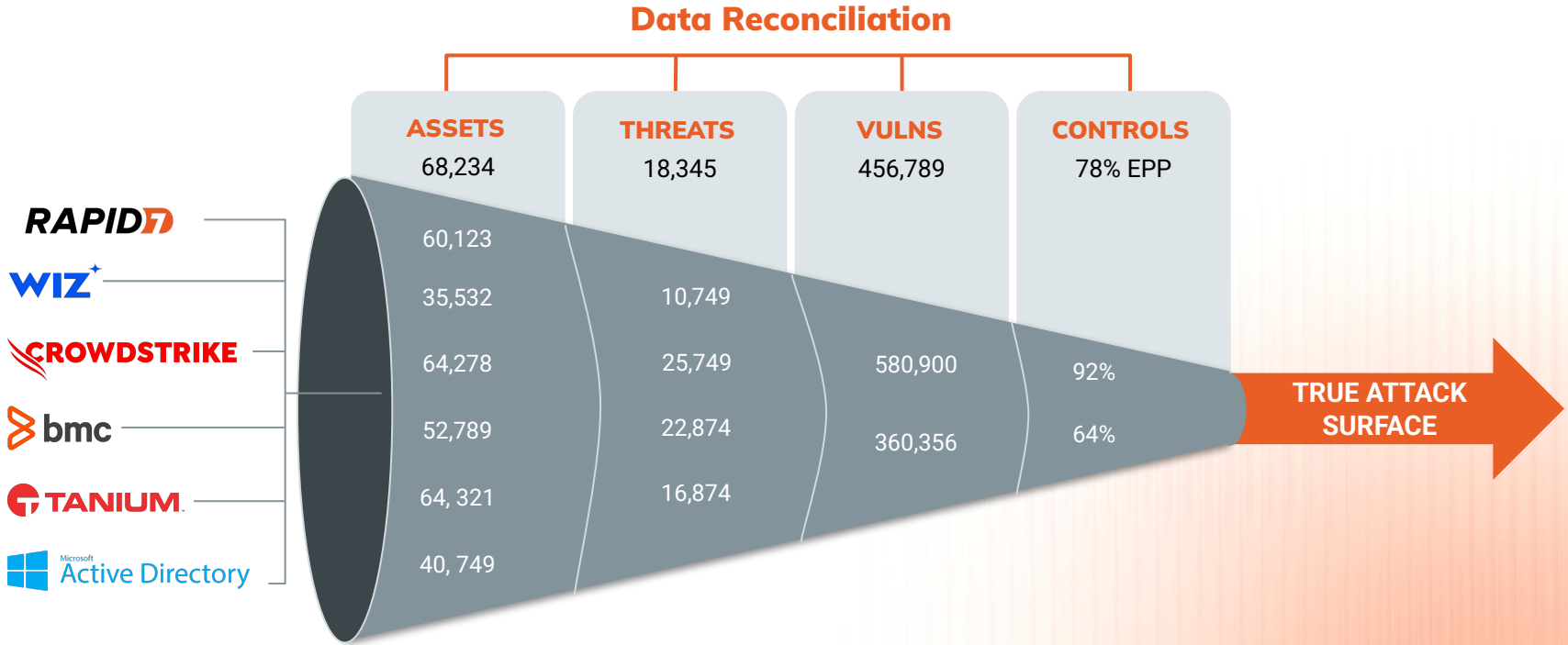
### COMPLEX SYSTEMS INTEGRATIONS

Caught in a web of disparate, conflicting sources to try to get effective context, make decisions, and know where to focus

### INCREASING BUDGET DEMANDS

Escalating investments in technologies and training, as teams become more burnt out and struggle to point to ROI

# Tool Sprawl Creates Conflict and Manual Reconciliation





# ExposureCommand



## Gain Attack Surface Visibility

Holistic attack surface management powered by **Surface Command**.



## Detect and Prioritize Vulnerabilities

**Hybrid Vulnerability Management** with purpose-built assessment from endpoint to cloud.



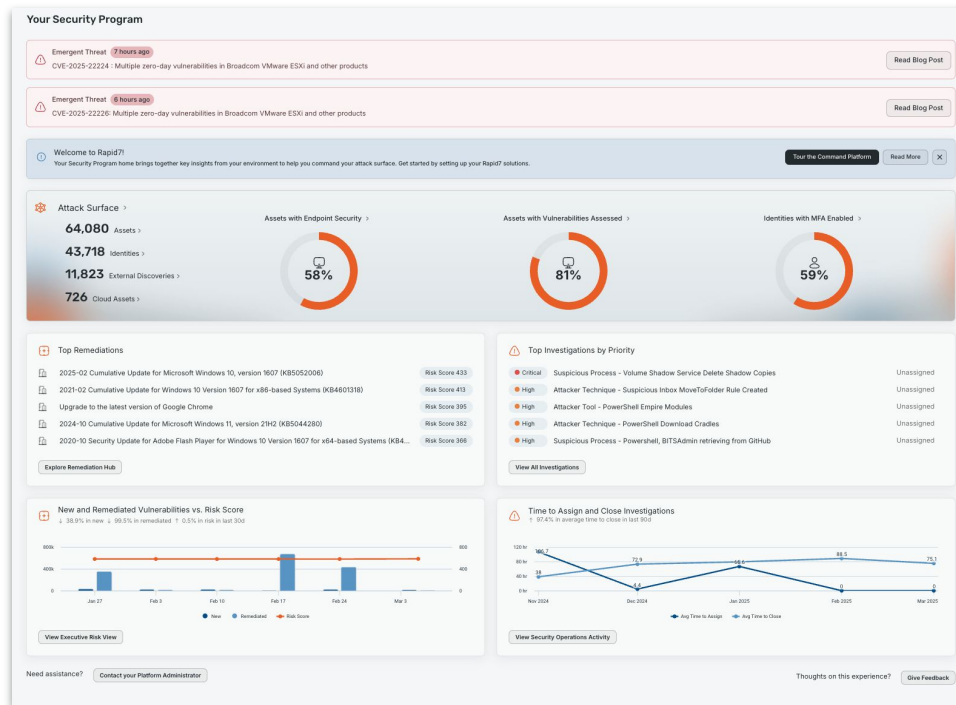
## Extend Security from Endpoint to Cloud

**Cloud-Native Application Protection** for proactive risk and compliance management.



## Secure Critical Web Applications

**Continuous Application Security Testing** to automatically identify, triage, prioritize and remediate application risk



TAKE COMMAND WITH

# Comprehensive Attack Surface Management

## Establish a Single Source of Truth

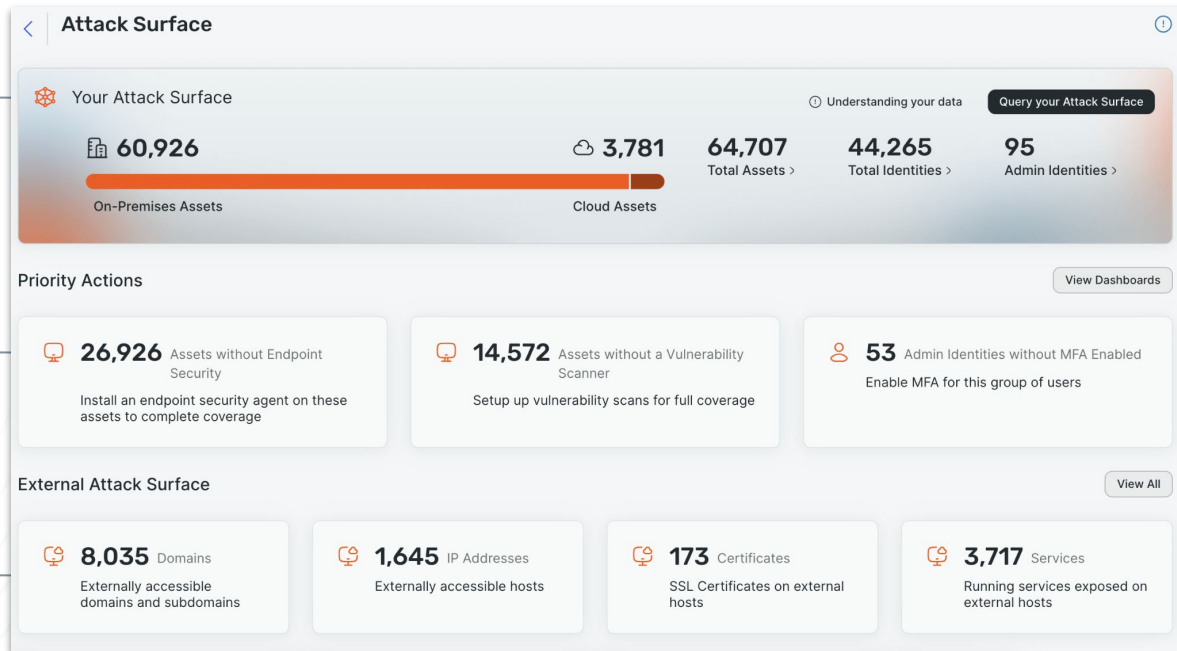
Consolidate asset inventory and identities across all internal tools to create a unified, reliable data source.

## Focus on High-Impact Actions

Focus your team on the highest-impact tasks by prioritizing signals with full context.

## Enhance Attack Surface Visibility

Get a complete view of your external attack surface to proactively detect and mitigate risk before exploitation.



## HOLISTICALLY MANAGE RISK

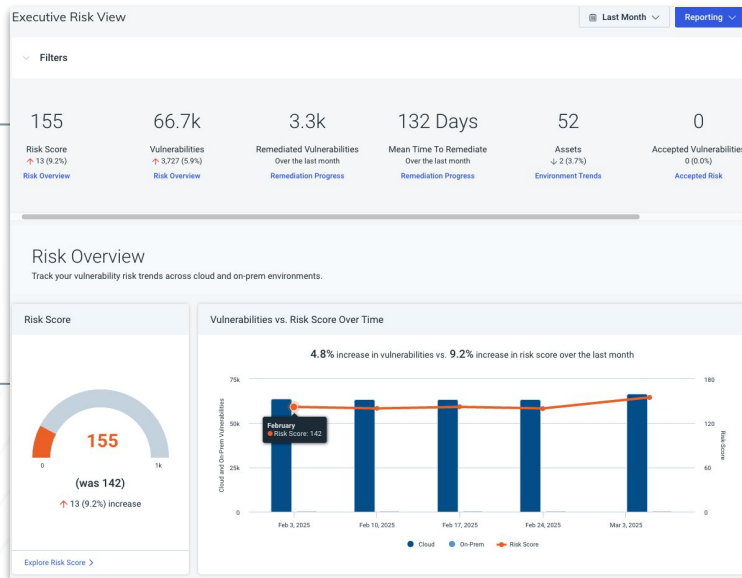
# With Unified Vulnerability Management

### Actionable Executive Insights

Provides a concise, real-time view of organizational exposure, enabling data-driven security decisions.

### Holistic Risk Scoring

Aggregates vulnerabilities, misconfigurations, and attack paths into a single risk metric to track security posture over time.



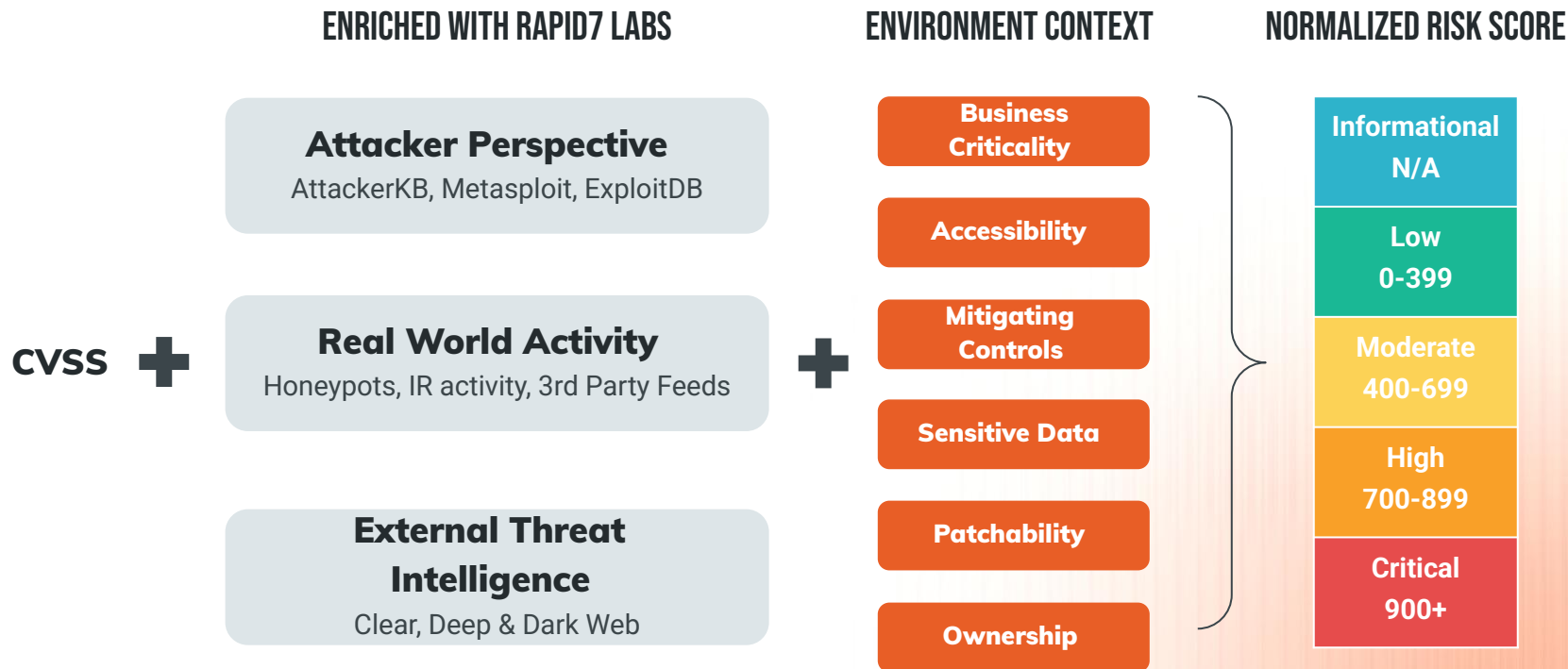
### Business Impact Alignment

Weighs asset criticality to prioritize threats that matter most.

### Trend Analysis & Risk Reduction Tracking

Tracks risk trends, showcasing security progress and ROI to stakeholders.

## Driven by Attack Intelligence and Unmatched Context



# Visualize Your External Attack Surface

External Attack Surface Add Seeds

Seeds    IPs & Domains    Network Services & Certificates

225  
Critical Severity

112  
High Severity

538  
Certificates

169  
Expired Certificates

4754  
Services

2046  
Discovered within 30 days

Type: Service ×    Type: Certificate ×    Severity: Critical ×    Clear all

225 Associated Discoveries Search...     Refresh    Export ▾

Name	Type	Severity	First Discovered	Last Discovered
9bf6e70fe1b60cb7a15547c945ce9d57e38...	Certificate	Critical	Mar 13, 2025	Mar 13, 2025
9b4264622407dbbd6a76bff67b472ede9...	Certificate	Critical	Mar 13, 2025	Mar 13, 2025
8f44af027e403d7ee5d0e2b6394ac32489...	Certificate	Critical	Mar 13, 2025	Mar 13, 2025
9232f57d85110aff479a056b439257d3718...	Certificate	Critical	Mar 13, 2025	Mar 13, 2025
7e17ce727b5437cf6694dcc182137b2af88...	Certificate	Critical	Mar 13, 2025	Mar 13, 2025

## ONE CENTRALIZED HUB

# For Exposure Prioritization and Remediation

### Solution-Oriented

Look for solutions, not problems. Understand the actions your team can take to make the biggest impact on organizational risk reduction.

### Context-Enriched

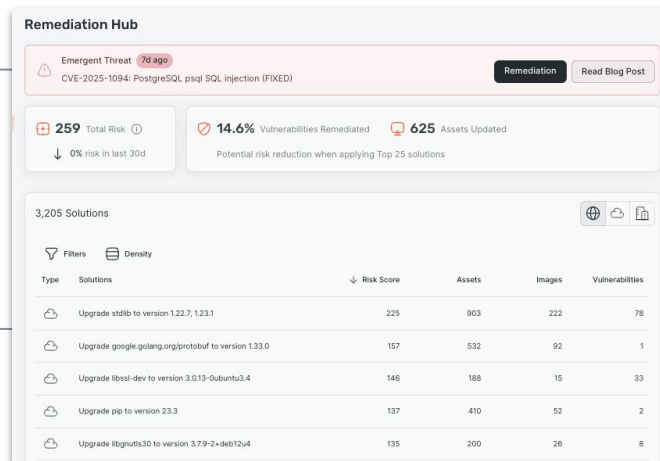
Ensure remediators have access to relevant business, environment and asset context to make informed decisions and act fast.

### Holistic Management

Break down silos between on-prem and cloud environments, taking a comprehensive approach across your entire hybrid estate.

### Deeply Integrated

Leverage 290+ out-of-the-box integrations with popular security and ITOps tools, allowing teams to weave exposure remediation into their existing workflows without adding friction.



### Act Once, Solve Many

Group remediation activity across your entire estate, allowing teams to work smarter, not harder, applying a solution globally ensuring risk is addressed in bulk



# Command Your Attack Surface

## Global Managed Services

### Exposure Management

VULNERABILITY  
CNAPP

DAST  
VALIDATION

### Detection & Response

MXDR  
DFIR

NEXT-GEN SIEM  
THREAT INTEL



## Attack Surface Management

ENDPOINT TO CLOUD VISIBILITY AND MONITORING

### Rapid7 AI Engine

CONNECT

CORRELATE

CONTEXTUALIZE

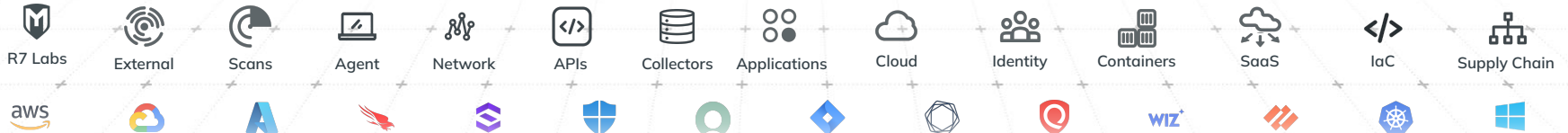
PRIORITIZE

RESPOND



### R7 NATIVE DATA COLLECTION

### YOUR CRITICAL SECURITY ECOSYSTEM



**Thank You!**